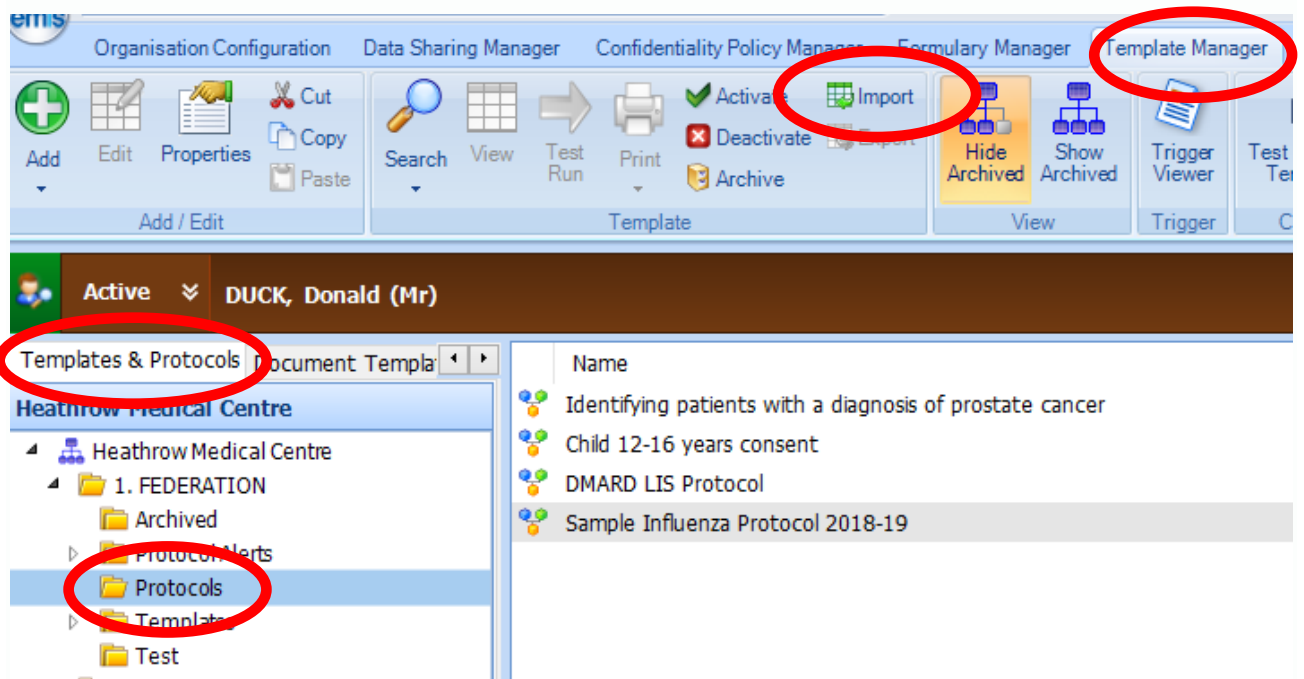
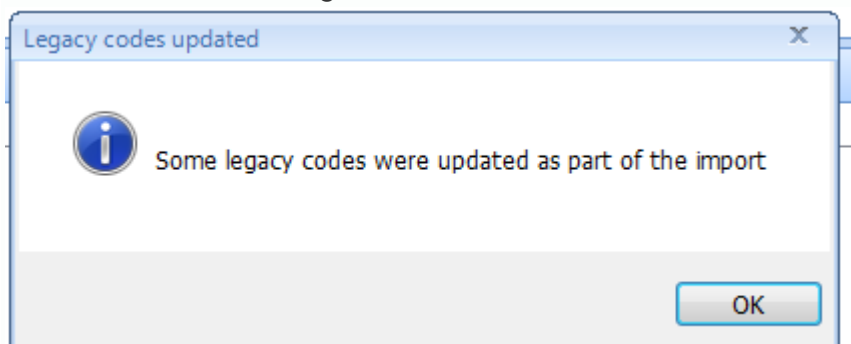


Installations Instructions For Influenza Protocol

1. Save (or download) the EMIS Protocol from the website to your desktop.
2. Unzip file to a suitable location.
3. Open EMIS template manger.
4. Navigate to a templates and protocols folder of your choice
e. g. **1. FEDERATION / Protocols.**



5. Then click IMPORT and select the template you would like to install from the desktop.
6. Note this protocol also contains an Influenza and pneumococcal template and may prompt to overwrite and existing versions.



7. Once the import is complete, test the template opens with a test patient.
8. Remember to deactivate (and archive) any old version of the templates as appropriate so these do not appear to users.

Disclaimer – Please note this protocol is provided as a sample and is intended to be customised for your practices prior to use. These tools are provided without support and may result in unintended behaviour. If you are unfamiliar with the EMIS templates or protocols it is advisable not to install these tools without appropriate local support. Data Care Solutions Limited do not take responsibility for any unintended consequences.